

OCR

Oxford Cambridge and RSA

H

Tuesday 12 May 2015 – Afternoon

**GCSE TWENTY FIRST CENTURY SCIENCE
BIOLOGY A/SCIENCE A****A161/02** Modules B1 B2 B3 (Higher Tier)Candidates answer on the Question Paper.
A calculator may be used for this paper.**OCR supplied materials:**

None

Other materials required:

- Pencil
- Ruler (cm/mm)

Duration: 1 hour

Candidate forename		Candidate surname	
-----------------------	--	----------------------	--

Centre number						Candidate number				
---------------	--	--	--	--	--	------------------	--	--	--	--

INSTRUCTIONS TO CANDIDATES

- Write your name, centre number and candidate number in the boxes above. Please write clearly and in capital letters.
- Use black ink. HB pencil may be used for graphs and diagrams only.
- Answer **all** the questions.
- Read each question carefully. Make sure you know what you have to do before starting your answer.
- Write your answer to each question in the space provided. Additional paper may be used if necessary but you must clearly show your candidate number, centre number and question number(s).
- Do **not** write in the bar codes.

INFORMATION FOR CANDIDATES

- The quality of written communication is assessed in questions marked with a pencil (✎).
- The number of marks is given in brackets [] at the end of each question or part question.
- The total number of marks for this paper is **60**.
- This document consists of **16** pages. Any blank pages are indicated.

2

Answer **all** the questions.

1 Harold has cystic fibrosis.

Hilda is a carrier for the disease.

(a) (i) Write down Harold and Hilda's genotypes.

Use **F** to represent the dominant allele and **f** to represent the recessive allele.

Harold's genotype: Hilda's genotype:

[1]

(ii) Which row in the table correctly describes Harold and Hilda's genotypes?

Put a tick (✓) in the box at the end of the correct row.

Harold	Hilda	
heterozygous	homozygous dominant	
heterozygous	homozygous recessive	
homozygous dominant	heterozygous	
homozygous dominant	homozygous recessive	
homozygous recessive	homozygous dominant	
homozygous recessive	heterozygous	

[1]

(b) Hilda is pregnant.

Harold is the father of the unborn baby.

Harold thinks that, because he has cystic fibrosis, the baby will definitely have cystic fibrosis.

Explain why Harold is **not** correct.

.....

.....

.....

..... [2]

3

(c) Harold and Hilda are offered the chance to have a genetic test on their fetus before it is born.

Many people have concerns about the genetic testing of fetuses.

Describe **three** of these concerns.

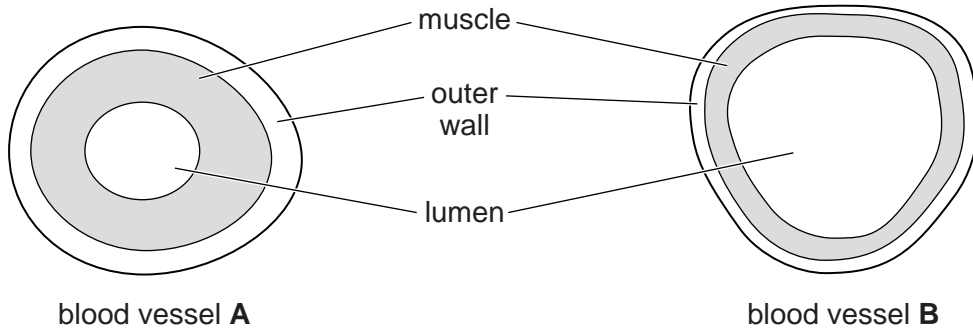
- 1
- 2
- 3

[3]

[Total: 7]

3 Blood vessels are tubes that carry blood.

The diagram shows cross-sections through blood vessels **A** and **B**.



not to scale

(a) (i) The diameter of the lumen of blood vessel **A** is 1 cm in real-life.

Calculate the cross-sectional area of the **lumen** of blood vessel **A**.

Use the formula, $area = \pi r^2$ (where π is 3.14).

Show your working. Give your answer to two decimal places.

cross-sectional area of **A** = cm^2 [2]

(ii) The cross-sectional area of the lumen of blood vessel **B** is approximately 1.40 cm^2

Explain the reason for the difference between the cross-sectional area of the lumens of the two blood vessels.

.....

.....

.....

.....

..... [2]

7

- (ii) Some people believe that this type of genetic testing should be compulsory for everyone.

Which of the following are **ethical** reasons why people might object to compulsory testing?

Put ticks (✓) in the boxes next to the **two** best **ethical** reasons.

Some people might be discriminated against when the test result is known.

Some people might find the test painful.

It will cost too much money to test everyone.

The results of the test might be inaccurate.

Everyone should have the right to choose whether they are tested or not.

[2]

- (d) Some drugs need to be converted into other molecules in the body before they will work effectively.

This conversion is done by the body's own enzymes.

Suggest why your genes might influence how drugs work in the body.

.....

.....

.....

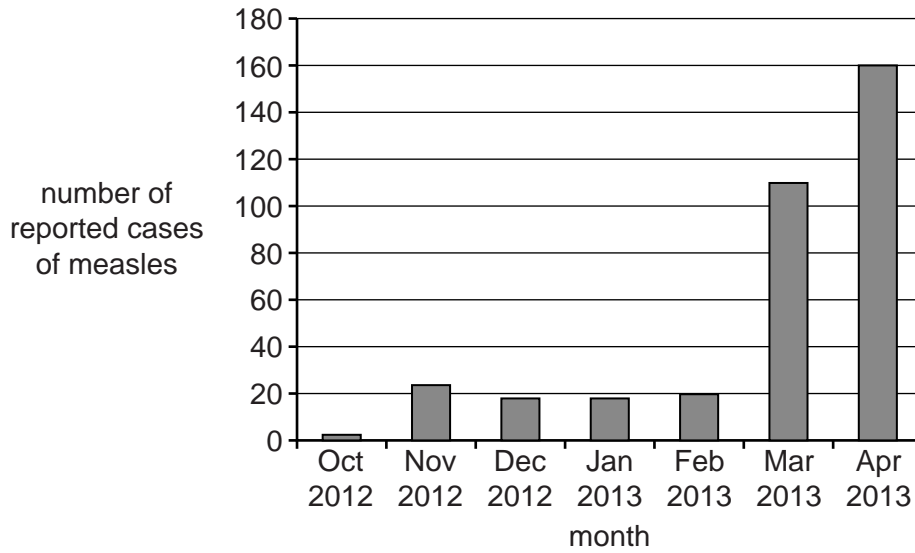
..... [3]

[Total: 18]

4 Measles is a very infectious and potentially deadly disease.

It is caused by a virus.

(a) The graph shows the number of measles cases reported in South Wales between October 2012 and April 2013.



(i) Calculate the percentage increase in reported cases of measles in South Wales between February and April 2013.

Show your working.

.....% [2]

(ii) This data is causing concern to doctors.

Explain why.

.....

.....

.....

.....

.....

.....

.....

..... [3]

(b) The MMR vaccination against measles, mumps and rubella is offered to babies in the UK when they are one year old.

In some years, fewer than 60% of parents in South Wales chose to vaccinate their babies.

Scientists think this may help to explain the shape of the graph in part (a).

Put a tick (✓) in the boxes next to the **two** statements which, when put together, could explain the shape of the graph for people in South Wales.

There is more chance of coming into contact with an infected person.

Measles is a potentially deadly disease.

More people will have the antibodies for measles.

A very high uptake of the MMR vaccine could eradicate measles forever.

There are more people with the measles virus.

Measles can be treated by antibiotics.

[2]

(c) Hilary does not want to have her baby vaccinated against measles.



Hilary

My friend told me that the risks of the MMR vaccination are too high.

Hilary's friend has a high perception of risk associated with the MMR vaccine.

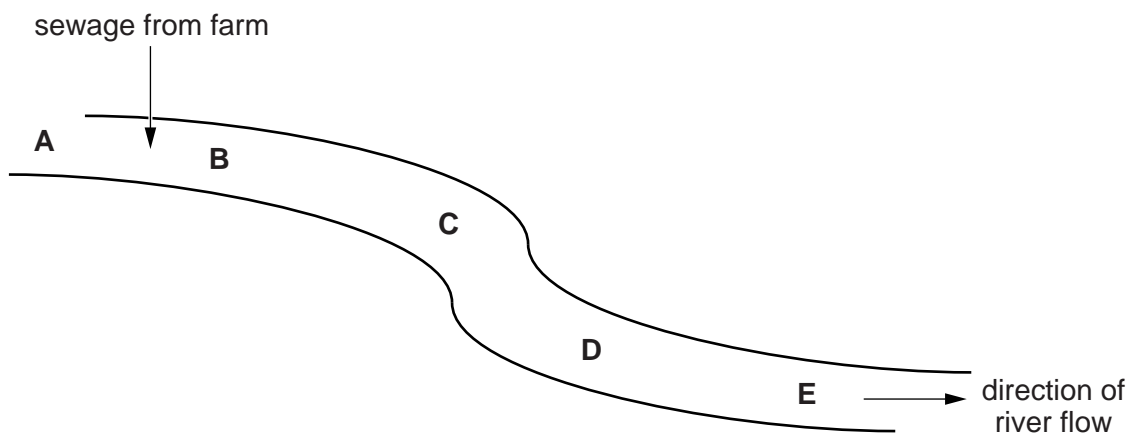
Explain why it is important for Hilary to consider the actual risk of the MMR vaccine rather than just listen to her friend.

.....
.....
..... [2]

[Total: 9]

10

- 5 Sewage (animal waste) from a farm is released directly into a river.



Five samples of water are tested at each site, **A**, **B**, **C**, **D** and **E**.

The number of mayfly nymphs found in each sample is recorded in a table.

Mayfly nymphs are young stages of mayflies.

	Number of mayfly nymphs found in each sample				
Sample	Site A	Site B	Site C	Site D	Site E
1	12	0	0	6	9
2	11	0	2	5	11
3	13	0	1	5	10
4	11	1	1	6	11
5	12	0	0	5	2
mean (rounded to nearest whole number)	12	0	1	5	

(a) Joe calculates the mean number of mayfly nymphs found at site **E** as 9.

Fred calculates the mean for the same site as 10.

Explain why both answers could be considered to be correct.

.....

.....

.....

..... [2]

(b) Suggest **two** conclusions that Joe could make from the data in the table.

1

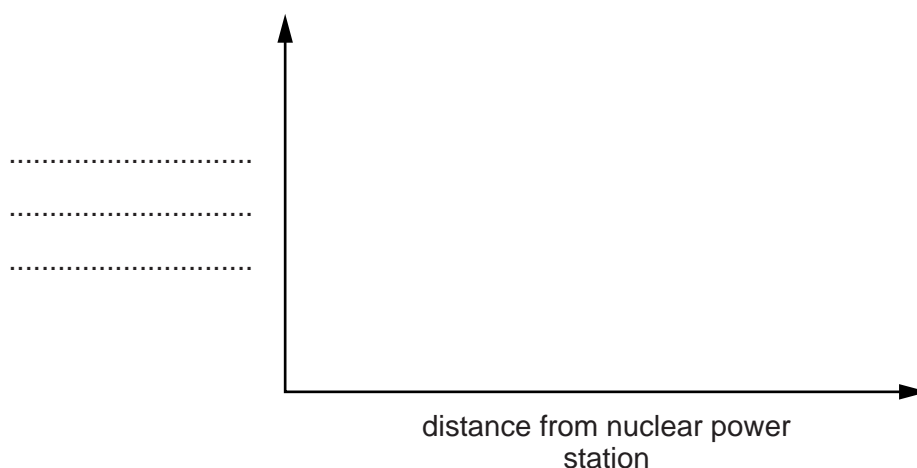
.....

2

..... [2]

- 6 In 2011, a huge earthquake in Japan caused a radiation leak from a nuclear power station. Two months later, butterflies were collected from different areas near the power station. Some of the butterflies had much smaller wings than normal butterflies, and irregular shaped eyes. Some scientists believe that the radiation caused a random change in the genes of butterflies.
- (a) Butterflies collected closer to the power station had more genetic changes than those collected further away.

Scientists start to draw a graph to show their results.



- (i) On the graph:
- complete the axis label
 - draw a line to show the relationship between the distance from the nuclear power station and the number of genetic changes. [2]
- (ii) The graph does not prove that the radiation leak from the nuclear power station caused the mutations in the butterflies.

Suggest what evidence scientists would need to be more certain of the cause.

.....

.....

.....

..... [2]

(b) Claire and Matt are discussing the possible mutations in the butterflies four years after the radiation leak.



Claire
I think that we are still seeing mutations in the butterflies because the radiation must have caused changes to the butterflies' body cells.

Matt
I disagree. Four years have passed so the mutations must have been in the sex cells of the butterflies.



Who do you agree with?

Give a reason for your answer.

.....
..... [1]

[Total: 5]

15

7 A supermarket is considering how they can make their shopping bags more sustainable.

(a) What is meant by sustainability?

.....

.....

..... [2]

(b) What factors need to be considered when making shopping bags in a sustainable way?

Put ticks (✓) in the boxes next to the **three** best answers.

The size and shape of the bag.

The cost of making the bag.

The materials used to make the bag.

The colour of the bag.

The energy used to make the bag.

The pollution created when the bag is made.

[2]

(c) Biodegradable bags are more sustainable than standard plastic bags.

It is still better to reduce the use of biodegradable bags.

Which statement best explains why?

Put a tick (✓) in the box next to the best answer.

Biodegradable bags need energy to be transported to the shops.

Biodegradable bags don't look as good as standard plastic bags.

Biodegradable bags need oxygen to break down.

Biodegradable bags are not expensive to make.

[1]

[Total: 5]

END OF QUESTION PAPER

PLEASE DO NOT WRITE ON THIS PAGE



Copyright Information

OCR is committed to seeking permission to reproduce all third-party content that it uses in its assessment materials. OCR has attempted to identify and contact all copyright holders whose work is used in this paper. To avoid the issue of disclosure of answer-related information to candidates, all copyright acknowledgements are reproduced in the OCR Copyright Acknowledgements Booklet. This is produced for each series of examinations and is freely available to download from our public website (www.ocr.org.uk) after the live examination series.

If OCR has unwittingly failed to correctly acknowledge or clear any third-party content in this assessment material, OCR will be happy to correct its mistake at the earliest possible opportunity.

For queries or further information please contact the Copyright Team, First Floor, 9 Hills Road, Cambridge CB2 1GE.

OCR is part of the Cambridge Assessment Group; Cambridge Assessment is the brand name of University of Cambridge Local Examinations Syndicate (UCLES), which is itself a department of the University of Cambridge.